



# GAT MONTHLY MEMBERSHIP PROGRESS REPORT

Results as of: 6/30/2023

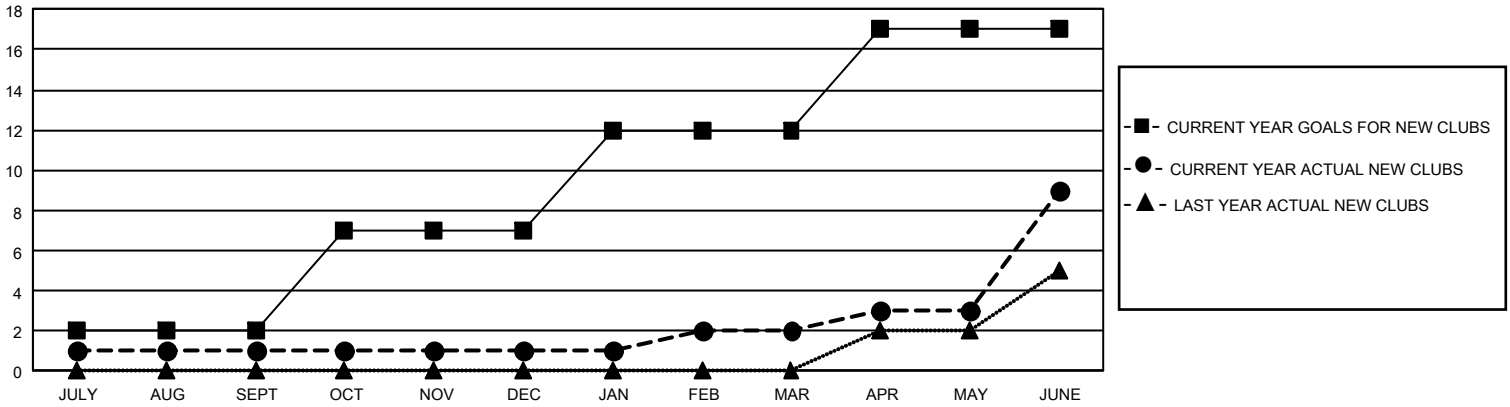
## GMT Constitutional Area 3, Group F

REPORT DOES NOT INCLUDE CLUBS IN UNDISTRICTED AREAS.

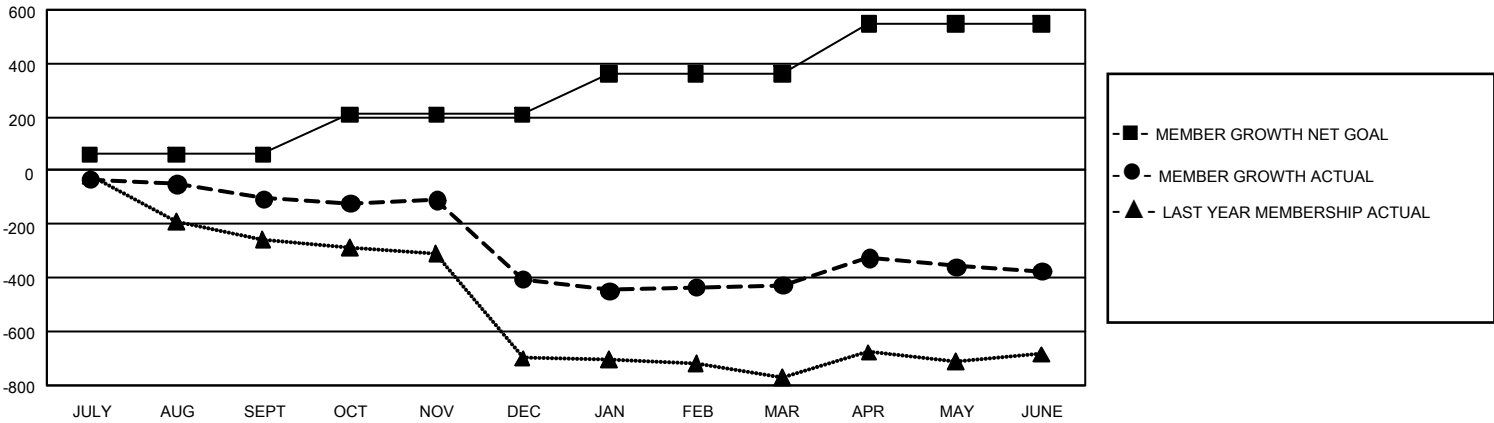
Clubs			
RESULTS FOR 2022-2023			
QUARTER	NEW CLUB GOAL	NEW CLUBS	DROPPED CLUBS
JULY/AUG/SEPT	6	1	3
OCT/NOV/DEC	15	0	13
JAN/FEB/MAR	15	1	1
APR/MAY/JUNE	15	7	4

Members			
RESULTS FOR 2022-2023			
QUARTER	MEMBER GROWTH NET GOAL	MEMBER GROWTH ACTUAL	DROPPED MEMBERS ACTUAL (including transfers)
JULY/AUG/SEPT	60	175	249
OCT/NOV/DEC	150	220	504
JAN/FEB/MAR	150	144	125
APR/MAY/JUNE	188	455	372

GOALS AND ACTUAL NEW CLUBS CUMULATIVE



GOALS AND ACTUAL MEMBERS CUMULATIVE



DROPPED CLUBS: 21	165 CLUBS OF 270 ADDED 1 OR MORE NEW MEMBERS	<u>GENDER DISTRIBUTION</u>	
		MALE	3,081 (46.74%)
<u>DROPPED MEMBERS</u>	<a href="#">CLICK HERE FOR CUMULATIVE MEMBERSHIP DATA</a>	FEMALE	3,490 (52.94%)
		NON BINARY	0 (0.00%)
		PREFER NOT TO ANSWER	21 (0.32%)
		TOTAL FAMILY UNIT MEMBERS	2,865
DECEASED	50	FAMILY MEMBERS PAYING HALF DUES	1,538
CLUB CANCELLED	215		
OTHER	984		
TOTAL	1,249		